

97311T Enclosed Burner with Touch Screen Control Panel

Designed for complete automatic operation of the entire Burner System, the S&J 97311T Enclosed Flare and Touch Screen Control Panel is specifically designed to operate efficiently with low BTU anaerobic digester waste gases. The S&J 97311T Enclosed Flare incinerates harmful emissions from waste gas streams. Typical applications include fermentation off gas piping systems such as anaerobic digesters. This unit has no visible flame which makes it ideal for areas where no open flame is permitted.

The 97311 was specifically designed to completely combust gas in digester and landfill systems. The 97311 uses maximum destruction efficiency (99%) and provides low NOX and CO emissions. This burner works is ideal for environments that have strict emission requirements and regulations (such as the EPA) and keeps emissions within the allowable limit. The telescopic design of the 97311 draws in the proper amount of air to gas ratio to achieve the optimum operating temperature in order for complete combustion to occur. Key data, such as gas stream composition and flow rates, are used to determine the appropriate residence time of the waste gas inside the stack. This is critical to both the reliability of the emissions removal as well as the efficiency of operation.

The Automatic Ignition System accepts a remote contact or signal from a pressure sensor to initiate ignition sequences. Advanced pilot design include UV sensor for positive flame proofing. Pilot System includes pilot pressure regulators and shut-off valves as specified.

The S&J 97311 can be configured with any combination of measuring instruments for complete recording and reporting. Flexible operation is achieved through innovative hardware design. The design of the 97311 flare eliminates the need for refractory lining in the combustion chamber.

Paired with a touch screen control panel, the flare controller is designed for complete automatic operation of the entire Flare System. Shand & Jurs' Flare System gives the operator much more flexibility in controlling the system with more parameters easily configured via the touch screen control panel. The Control Panel can also be connected to a local PLC.

The S&J 97311 accommodates fluctuating gas stream composed of low BTU "wet" methane. It can withstand the severest of process environments including high wind loading and seismic conditions as specified.



Features

- No visible flame
- Touch Screen Control Panel
- Controlled Combustion environment with natural draft design
- Meets emission standards of EPA & local regulations
- High Destruction removal efficiency
- High turn down ratios
- Ground Level inspirating venturi pilot/ignition lines
- Operates with low input pressures
- Advanced ground level automatic ignition system

Dimensions:

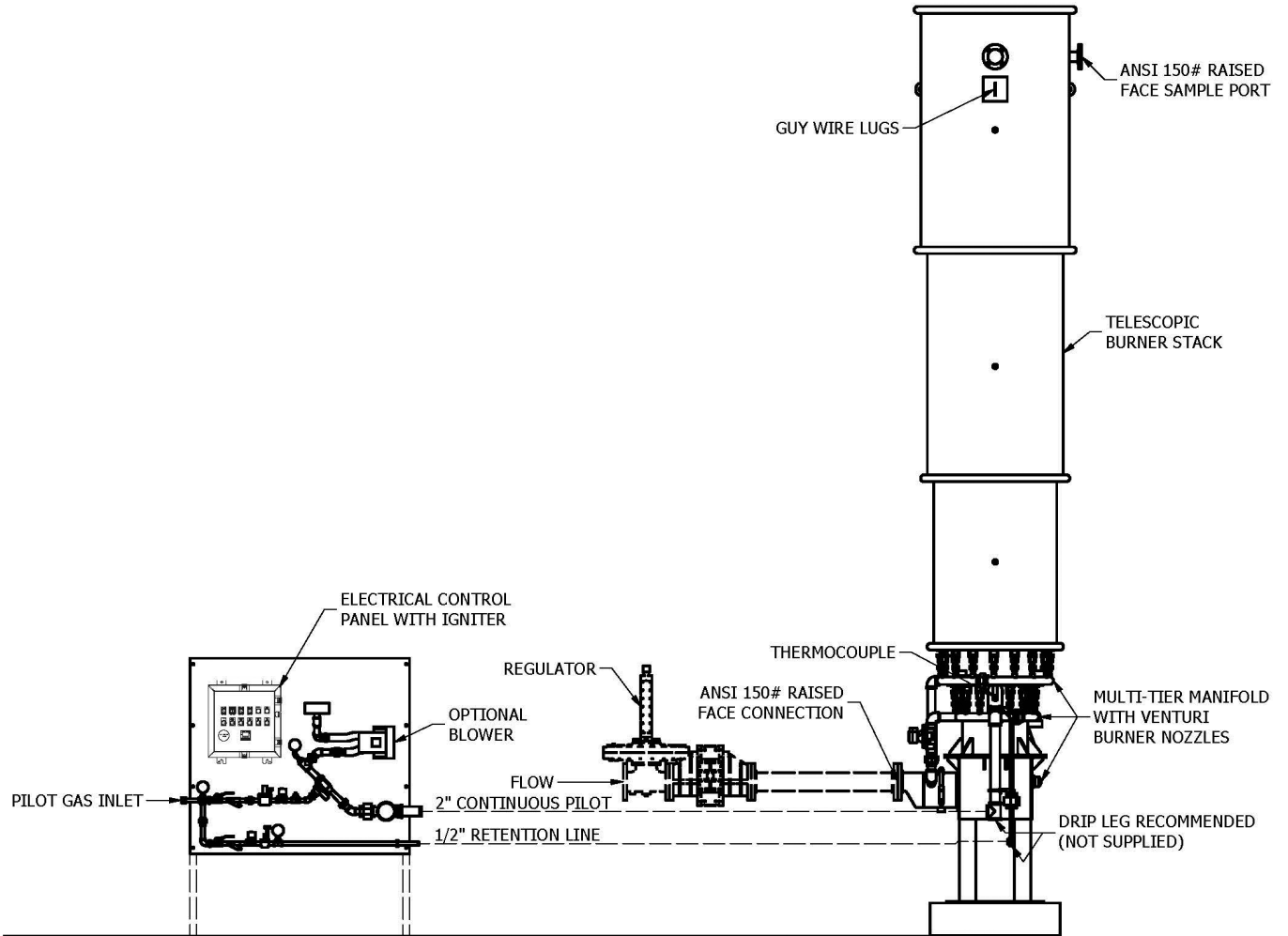


FIGURE 1

All designs subject to change. Certified dimensions and specifications available upon request.