

97125 Condensate Accumulator

The S&J 97125 Condensate Accumulator is designed to permit the removal and storage of liquid condensation from biogas while maintaining system pressure integrity. Condensate is a typical byproduct that forms in the pipeline when the hot, saturated biogas cools as it moves through the piping system. The removal of condensate from the biogas is necessary to keep the gas train running by protecting the downstream equipment and piping from corrosion, blockage and water accumulation.

The 97125 installation will typically be immediately downstream of the digester at the lowest elevation to ensure the gravity feed of the condensation into the holding tank. In most applications, the 97125 Condensate Accumulator is used in conjunction with the S&J 97120 Sediment Trap to ensure the optimal performance of the system.

The operation of removing condensate from within the 97125 is managed by a piped connection (drip leg) constructed through the tank wall, which extends down to the drain elevation. As the condensate level rises to the level of the drain, it will be evacuated through the drip leg. To ensure proper management of condensation from the biogas system, an optional liquid level switch and solenoid can be added to control the discharge of the condensation from within the 97125. This level switch provides for automatic solenoid operation of the internal drip leg. Consult factory for this option.

Two standard capacities, 13 gallons and 125 gallons, are available for the 97125 Condensate Accumulator. Each unit can be provided for a working pressure up to 25 psig and is rigorously tested to confirm the structural integrity of the vessel. Consult factory for custom designs.

Shand & Jurs offers a range of materials of construction for the 97125 Condensation Accumulator. Standard construction consists of carbon steel with a primer coating. Other coatings are available for corrosion protection. In addition, both 316 and 316L Stainless Steel construction are also available. The standard inlet connection is a 4" ANSI B16.5 (125/150 lb.), flat face flange mounted to the top of the tank. (Other connections are available upon request). The standard drain is a 3/4" NPT male connection. The blowout port is a 2" NPT male connection with cap. The 97125 is equipped with two-1/2" female NPT connections for installation of either a 316 Stainless Steel, brass or bronze optional sight glass for visual indication of condensate level.



Features

- Efficiently stores and evacuates condensate
- Protects system from damage due to corrosion
- Large storage capacity
- Optional alarm switches
- Optional sight glass
- Optional solenoid

Specifications:

Capacity:

13 Gallons or 125 Gallons

Inlet:

4" Flat Face ANSI 125/150 lb

Outlet:

3/4" NPT, Male

Drain:

2" NPT, Male

Material:

Steel, 304 Stainless Steel, 316 or 316L Stainless Steel

Seals:

Buna-N or Neoprene

Hardware:

18-8 Stainless Steel (Standard)

316 Stainless Steel with 316 Stainless Steel Body

Sight Glass:

316 Stainless Steel, Brass or Bronze

Two -1/2" NPT Connections, Female

Accessories:

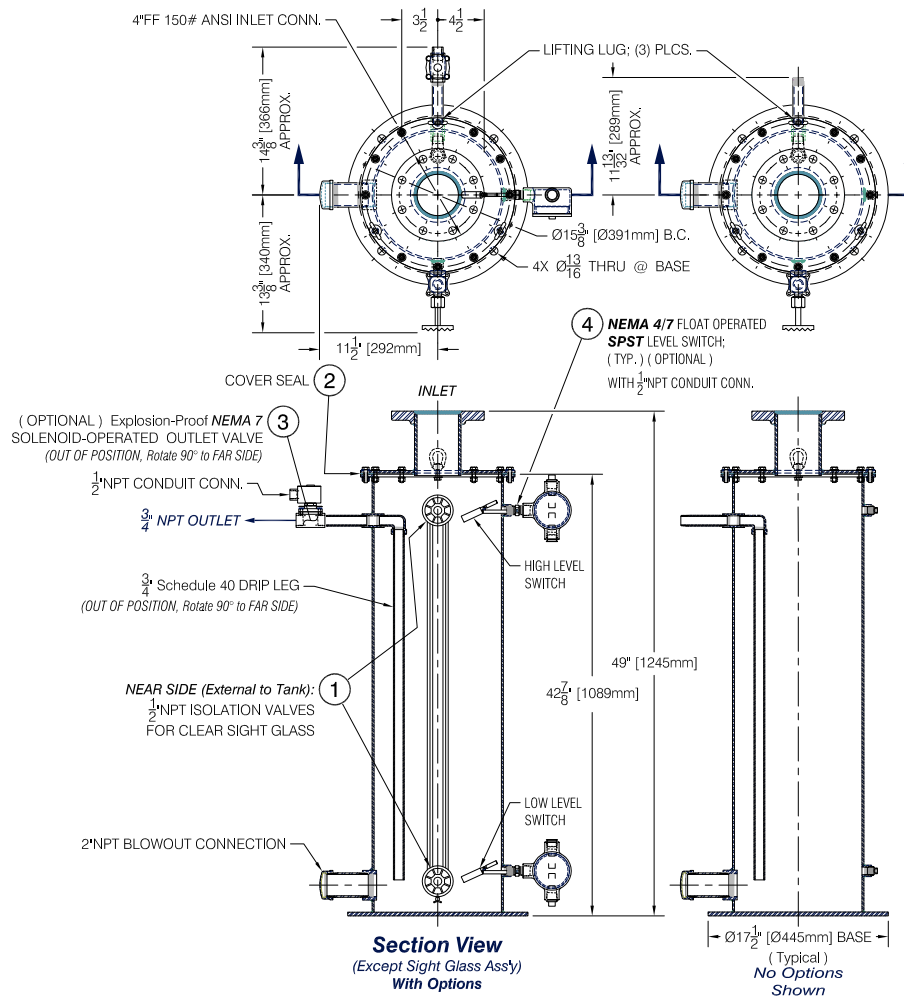
Limit Switches and/or Solenoid Valve (120VAC)

NEMA 7, NEC Class I Group D

Maximum Working Pressure:

5 PSIG, 25 PSIG

13 Gallon 97125 Dimensions:

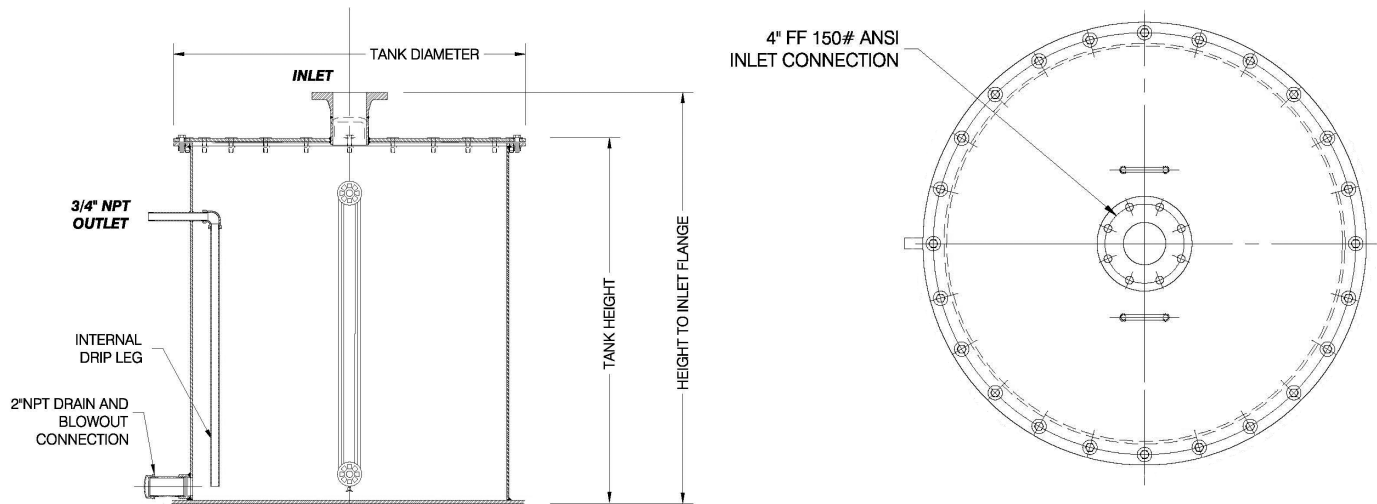


Dimensions specified in inches.

97125 Condensate Accumulator



Dimensions:



Tank Capacity	Dimensions (Inches [mm])		
	Tank Diameter	Tank Height	Height to Flange
13 Gallon	12 ¾ [324]	43 ¼ [1099]	49 [1245]
125 Gallon	42 [1067]	43 ½ [1105]	49 [1245]

All designs subject to change. Certified dimensions and specifications available upon request.