

94306 Vertical Flame Arrester

The Shand & Jurs Flame Arresters are designed to provide a positive flame stop on low pressure tanks, storage tanks and anaerobic digesters containing flammable liquids, solvents or gases having a low flash point. The 94306 not only provides exceptional protection against fire from external ignition, but also offers maximum flow capacity.

Shand & Jurs Flame Arresters are generally installed with pressure-vacuum vents, or in-line free vent to atmosphere. The tube bank design consisting of a spiral-wound crimped ribbon around a solid core, maximize flow capacity with minimum pressure drop. This unique design meets FM Factory Mutual approval for all sizes and material options.

Standard construction includes light weight cast aluminum, cast iron, cast steel, 304 stainless steel and 316 stainless steel body materials suitable for most environments. Tube bank is available in aluminum, 304 stainless steel and 316 stainless steel as standard. For highly corrosive and severe conditions, special materials and coatings are available.

Available with flat face flanges for aluminum or raised face flanges for cast steel and stainless steel to match ANSI, EN1092-1, or JIS 10K specifications.

Periodic inspection, maintenance and replacement of the tube bank is easily accomplished by simply removing tie-bolts and expanding the remaining jack screws. Once the upper and lower body sections are expanded, the tube bank and shell are easily removed with the aid of a handle.

For in-line deflagration arrester, see the Shand & Jurs 94406.



Features

- Unitized tube bank design
- Maximum protection and efficiency with minimum pressure drop
- Wide range of standard construction materials
- Easy inspection and maintenance, due to simple removal of tube bank on site
- FM Approval, 2" to 12" inclusive, NEC Group

Specifications

*Sizes:

2", 3", 4", 6", 8", 10" and 12"
*Consult Factory for larger sizes

Max. Static Pressure:

5 PSIG Standard.
25 and 50 PSIG Consult Factory.

Flange Rating:

To match drilling of ANSI 125/150 lb. flat face or 150 lb. raised face (cast aluminum body option available with flat face only). EN1092-1 and JIS options.

Approval/Gas Application:

FM (Factory Mutual), NEC Group D

Materials of Construction

Body:

Cast Iron, Cast Steel, Cast Aluminum, 304 Stainless Steel or 316 Stainless Steel

Hardware:

18-8 Stainless Steel Standard, 316 Stainless Steel

Tube Bank:

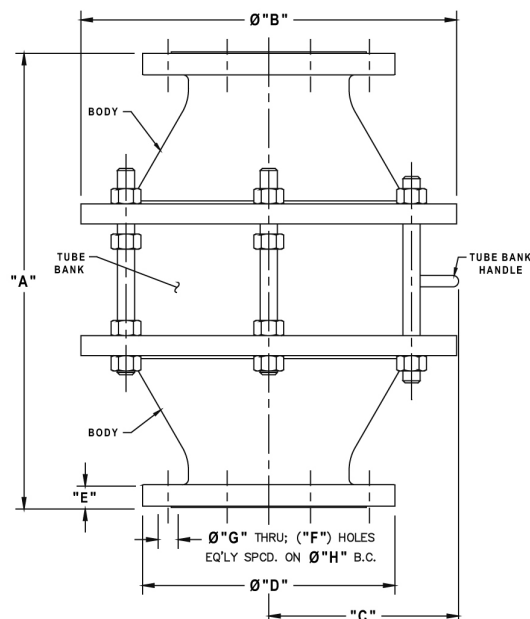
Aluminum with Aluminum Shell;
304 Stainless Steel with Steel Shell;
304 Stainless Steel with 304 Stainless Steel Shell;
316 Stainless Steel with 316 Stainless Steel Shell

Outline Dimensions

Dimensions in Inches									Approximate Shipping Wt. (lbs)	
Vent Size	"A"	Diameter "B"	"C"	Diameter "D"	"E"	Holes "F"	Diameter "G"	Diameter "H"	Alum.	Iron
2"	13 3/8	8 1/2	7 7/16	6	5/8	4	3/4	4 3/4	15	43
3"	15 5/8	10 1/2	8 5/16	7 1/2	3/4	4	3/4	6	25	65
4"	17 7/8	12 3/8	6 1/2	9	15/16	8	3/4	7 1/2	45	120
6"	19 7/8	16 3/8	8 1/4	11	1	8	7/8	9 1/2	69	207
8"	24 1/2	20 1/2	10 3/8	13 1/2	1 1/8	8	7/8	11 3/4	93	280
10"	28 7/8	24 1/2	12 1/4	16	1 3/16	12	1	14 1/4	165	480
12"	32 7/8	28 3/4	14 3/8	19	1 1/4	12	1	17	200	610

ANSI Connection shown. Other Connection Sizes Available.

Installation Note: Locate flame arrester within 10 pipe diameters of potential atmospheric ignition source.



All designs subject to change. Certified dimensions and specifications available upon request.