

94221 Emergency Vent & Manhole Cover (Pressure & Vacuum)

The Shand & Jurs 94221 Emergency Vent and Manhole Cover provides emergency relief of excessive internal pressure and vacuum beyond that provided by tank conservation vent requirements.

This weight loaded vent utilizes Expanda-Seal diaphragms which provide tight seals between pallets and seats. Special diaphragm materials are available for vents subjected to severe low temperatures or used on tanks storing heated stock. Corrosion resistant pressure/vacuum seat is standard.

The 94221 is available in 20" and 24" sizes to fit a standard API or ANSI flange. Special Flanges are available including EN1092-1.

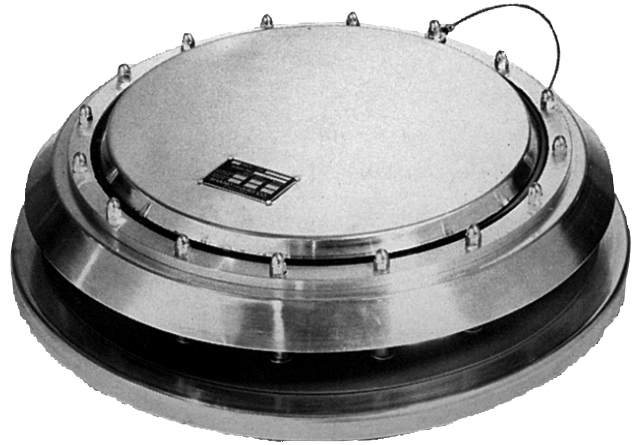
The pallet starts to lift when set pressure is approached. Flow efficiency rises rapidly to approximately 60% of a perfect orifice at 40% excess of the set pressure.

At a higher overpressure, the pallet completely clears the manhole and the efficiency approximates 75%. For a standard setting the capacity at 1.4 oz/in² (40% overpressure) is approximately 500,000 SCFH for the 20" size.

Pallet construction permits settings from 1.0 oz/in² for aluminum pallet & 1.3 oz/in² for S.S. pallet standard to 8 oz/in² maximum pressure. Vacuum settings are from 1.1 oz/in² standard to 4.0 oz/in² maximum. If specifying other than standard vacuum setting, it must be recognized that increased vacuum setting automatically increases the set point of pressure relief.

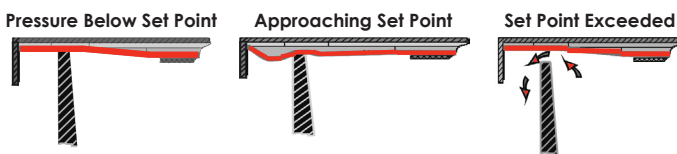
Expanda-Seal

Shand & Jurs "Expanda-Seal" option is available on all pressure pallet assemblies. This feature significantly reduces leakage. The ballooning effect of the Teflon diaphragm effectively seals the valve.



Features

- Design incorporates pressure and vacuum relief
- 20" and 24" roof manhole
- "Self-energizing" Expanda-Seal diaphragm assures a tight seal
- Reduced maintenance costs
- No unbolting of vent for gasket replacement or tank examination



Specifications

Type Vent:

Normal Service, Low Temperature Service and Low Base for Liquid Overflow

Maximum Settings:

Pressure: 8 oz/in² (13.84" W.C.)
Vacuum: 4.0 oz/in² (6.92" W.C.)

Standard Settings:

Pressure: 1.0 oz/in² (1.73" W.C.) in Aluminum
1.3 oz/in² (2.25" W.C.) in Stainless Steel
Vacuum: 1.1 oz/in² (1.9" W.C.)

Connection Size:

20" or 24" Flange

Materials of Construction*

Base:

Normal Service or Low Base: Steel
Low Temperature: Aluminum

Pressure Seat:

Normal Service or Low Base: Stainless Steel
Low Temperature: Aluminum

Diaphragm Clamp Ring:

Normal Service or Low Base: Steel
Low Temperature: Aluminum

Vacuum Seat, Cover & Pallet:

Aluminum

Pallet Guide & Pressure Pallet:

Aluminum

Pressure & Vacuum Diaphragm:

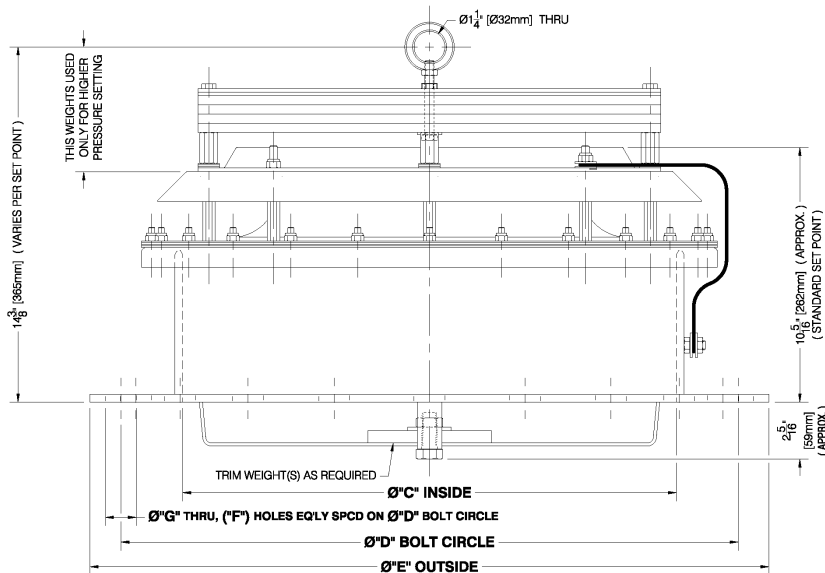
FEP Teflon

Back-up Disk, Vacuum Diaphragm Gasket & Diaphragm Spacer:

N8090, Fiber/Nitrile

*Optional: All Steel, Stainless Steel and Other Materials Available.

Dimensions



Vent Size	Connection Matching Size	"C"	"D"	"E"	"F" Holes	"G"
20"	20" ANSI 125/150 lb.	20	25	27 1/2	20	1 1/4
20"	24" ANSI 125/150 lb.	20	29 1/2	32	20	1 3/8
24"	24" ANSI 125/150 lb.	24	29 1/2	32	20	1 3/8
20"	20" API Roof Manhole	20	23 1/2	26	16	3/4
20"	24" API Roof Manhole	20	27 1/2	30	20	3/4
24"	24" API Roof Manhole	24	27 1/2	30	20	3/4

All designs subject to change. Certified dimensions and specifications available upon request.