

## 92302 Liquid Level Indicator

The Shand & Jurs Model 92302 Liquid Level Indicator is a reliable and affordable float actuated level gauging system. It is designed to provide reliable and virtually trouble-free service for installation not requiring accuracies better than  $\pm 1$  inch.

Shand & Jurs provides as standard, rugged aluminum, redwood, and 316 stainless steel indicator boards. Standard mounting hardware is steel (316 SS available). Graduations are in feet and inches or meters and decimeters, large black numerals make readout highly visible from a distance. Half or third travel indicator boards are offered for special installations, such as underground tanks. Outage (reverse reading), volumetric and custom marked boards available.

To simplify ordering and installation, Shand & Jurs provides complete installation kits. Complete kit includes float, brackets, clamps, anchor bar, target, sheaves, guide wire spring assembly, guide wire and liquid seal when required.

The choice of material selection for kits permits installation in a variety of environmental conditions. To provide a vapor tight installation and protect the gauge board from corrosive tank vapors, a standard liquid seal is available.

Shand & Jurs also offers limit switches to actuate high and low level alarms, provide pump control or other signaling functions.

The MCG 2420 Transmitter can easily couple to the Shand & Jurs 92302 Liquid Level Indicators. See L&J engineering's MCG 2420 Transmitter data sheet for more information.



## Features

- Low cost and simple installation
- Accurate to  $\pm 1$  inch
- Choice of standard materials to accommodate most installations
- Extremely visible numerals and graduations
- Durable and reliable construction materials on all moving parts
- Custom marking available
- Optional electronic level gauging via the MCG 2420

**Specifications:**

---

**Gauging Range**

55 Feet or 16.8 Meters (Higher Available)

**Operating Temperature:**

-30°F to 160°F

**Type of Kit Class:**

Class A (Aluminum)

Class B (Nodular Iron)

**Materials of Construction:**

---

**Indicator Board:**

Redwood, Aluminum, or 316 SS optional

**Float Cable:**

Stainless Steel

**Float:**

316 SS (304 SS or Monel Optional)

**Cable Clamp:**

Stainless Steel

**Brackets:**

Steel (316 SS Optional)

**Target:**

Steel (316SS Optional)

**Anchor Bar:**

Steel (316 SS Optional)

**Sheave Assembly:**

---

**Housing and Cover:**

Cast Aluminum or Nodular Iron (316 SS Optional)

**Bearing:**

Teflon

**Sheave:**

Delrin

**Shaft:**

Stainless Steel

**Liquid Seal (Class A Only):**

---

**Housing and Cover:**

Cast Aluminum

**Bearing:**

Teflon

**Sheave:**

Delrin

**Shaft:**

Stainless Steel

**Pipe:**

Steel

NOTE: All 316 SS Optional

**Guide Wire Spring Assembly:**

---

**Housing Assembly:**

Steel

**Guide Wire:**

Stainless Steel

**Spring:**

Steel

NOTE: All 316 SS or 304 SS Optional

**Liquid Seal Installation:**

---

Maximum tank pressure 5 oz./sq. in.<sup>2</sup> for antifreeze or 4 oz./sq. in. for medium weight oil (0.8 Sp. Gr.)

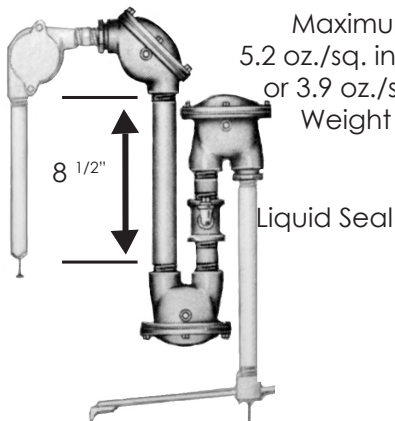
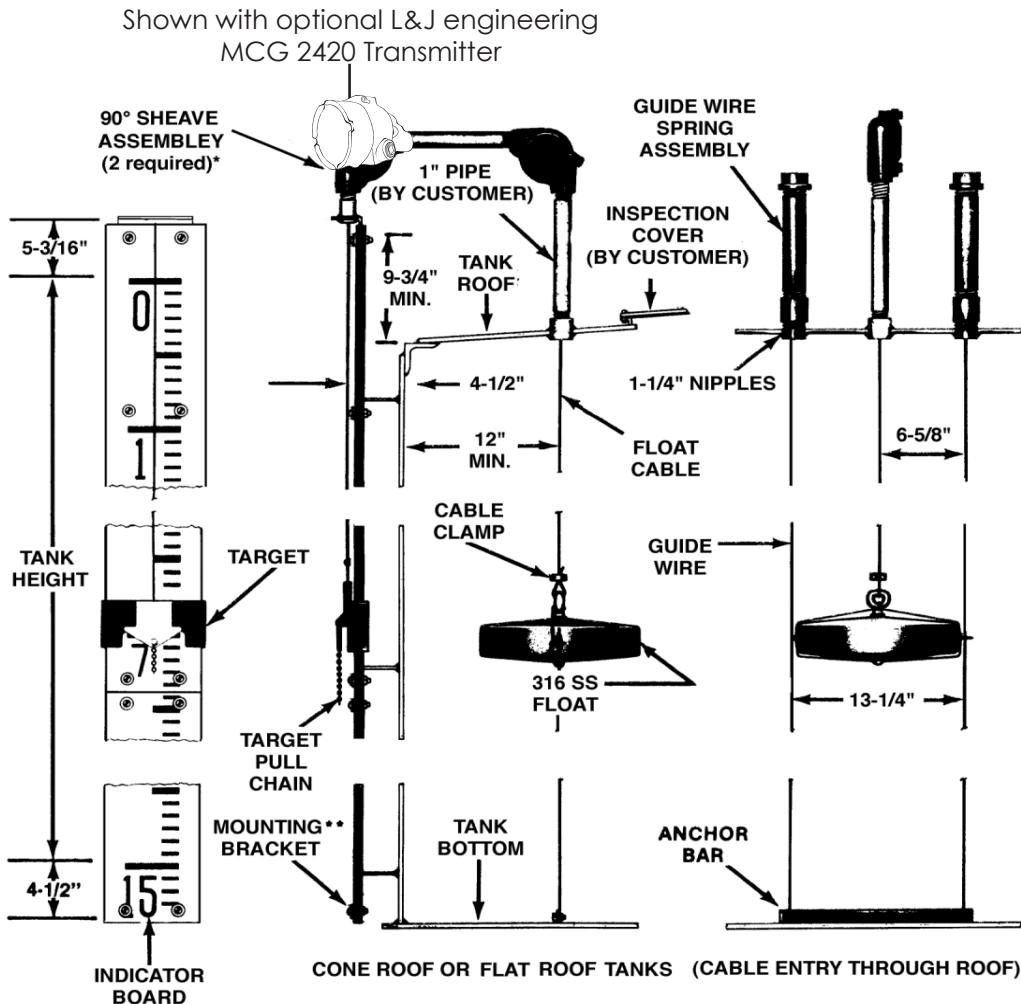
For higher tank pressures, refer to Liquid Seal Model 93603.

Additional options available. Consult Factory

# 92302 Liquid Level Indicator

# SHAND & JURS

## Dimensions:



Maximum Tank Pressure  
5.2 oz./sq. in.<sup>2</sup> for Ethyleneglycol  
or 3.9 oz./sq. in.<sup>2</sup> for Medium  
Weight Oil (0.8 SP. GR)

### NOTES:

1. Specify Kit No. 1 (Class A or B) for redwood (without liquid seal).
2. Specify Kit No. 2 (Class A or B) for aluminum (without liquid seal).
3. Specify Kit No. 3 (Class A only) for redwood with liquid seal.\*\*\*
4. Specify Kit No. 4 (Class A only) for aluminum with liquid seal.\*\*\*

\* 1 Required for Kit 3 & 4

\*\* 2 Brackets supplied per tank height

\*\*\*Liquid seal body available in PVC consult factory

All designs subject to change. Certified dimensions and specifications available upon request.

# SHAND & JURS